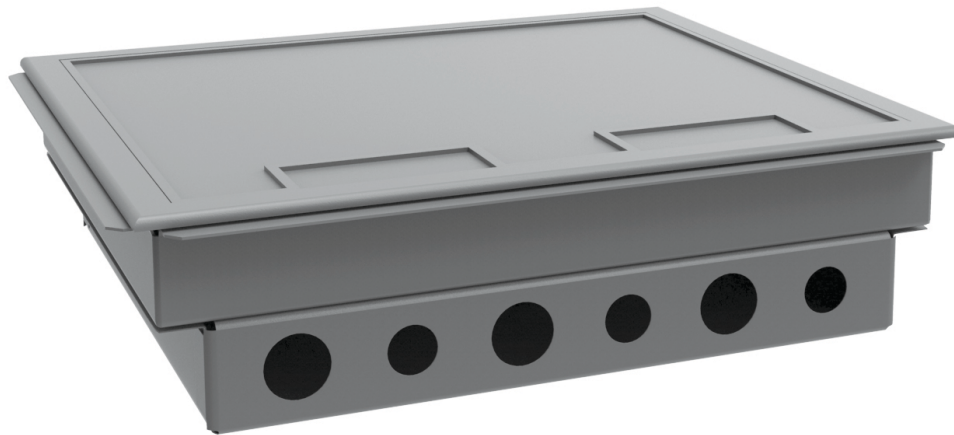


UNITILE® CONCEALED ELECTROFLEX

ILLUSTRATION



SYSTEM DESCRIPTION

The Unitile® concealed electrical monument box - ELECTROFLEX, has a depth of 80 mm to accommodate plug-in facility and 35mm depth to accommodate power, data and voice accessories. The electro-flex shall be constructed from Powder coated MS sheet and its internal compartment shall be provided with a plate to accommodate switch plate as mentioned above. The hinge lid shall be Powder-coated MS sheet construction and shall have recessed grey ABS trim to accommodate carpet tiles/HPL/PVC to match the adjacent floor finish.

Electroflex provides ideal solutions for the distribution of cables and access to power, data and communication services under the floor.

| Depth (Below floor) | Overall Depth | Width (Inside) | Length (Inside) | Floor Hole Size (Cut out size) | Overall Length | Overall Width |
|---------------------|---------------|----------------|-----------------|--------------------------------|----------------|---------------|
| 74 mm | 80 mm | 248 mm | 300.40 mm | 249.50 x 301.50 mm | 328 mm | 275 mm |