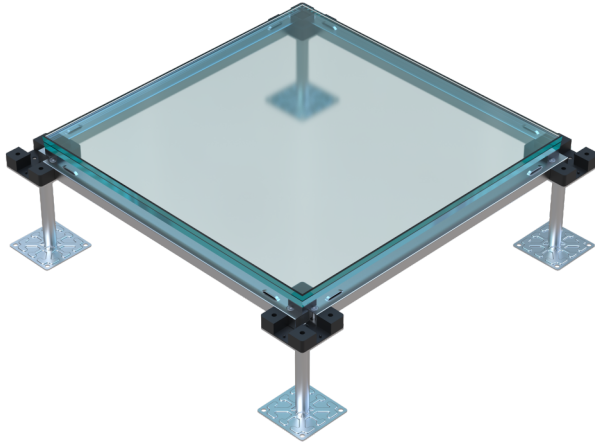


## UNITILE® VISION PANEL

### DESCRIPTION



UNITILE® VISION Access Floor panel, is a complete all glass panel or a glass floor tile, installed at the designated places to enable monitoring of critical under floor activities or services without lifting any tiles. These glass panels are engineered to fit into any of the raised access floor systems supplied by Unitile.

25.52 mm laminated clear toughened glass is a safety glass made of two layers of 12 mm clear glass and sandwiched together. The middle layer is a 1.52 mm PVB film. The two layer of glasses are strongly bonded together by heating and high-pressure process. The lamination process, makes the glass durable and protects it against breakage.

### CONSTRUCTION DETAILS

Material of construction	Laminated clear toughened glass
Overall dimension of Glass	600 mm (W) x 600 mm (L) x 25.52 mm (Thk.)
Overall dimension of Panel	600 mm (W) x 600 mm (L) Thk: Suitable to the adjacent floor tile

- ▶ Dual clear toughened glass provides extra strength to the panel.
- ▶ Panel is fully interchangeable with solid panels on Unitile raised access floors ESRG systems without modification to the understructure.

### PERFORMANCE CONFORMING TO MASTER SPECS 10270 / 096900 (USA)

Concentrated Loads	110 Kgs (243 lbf) without a top-surface deflection under the load. (Recommended for human walk load)
--------------------	--

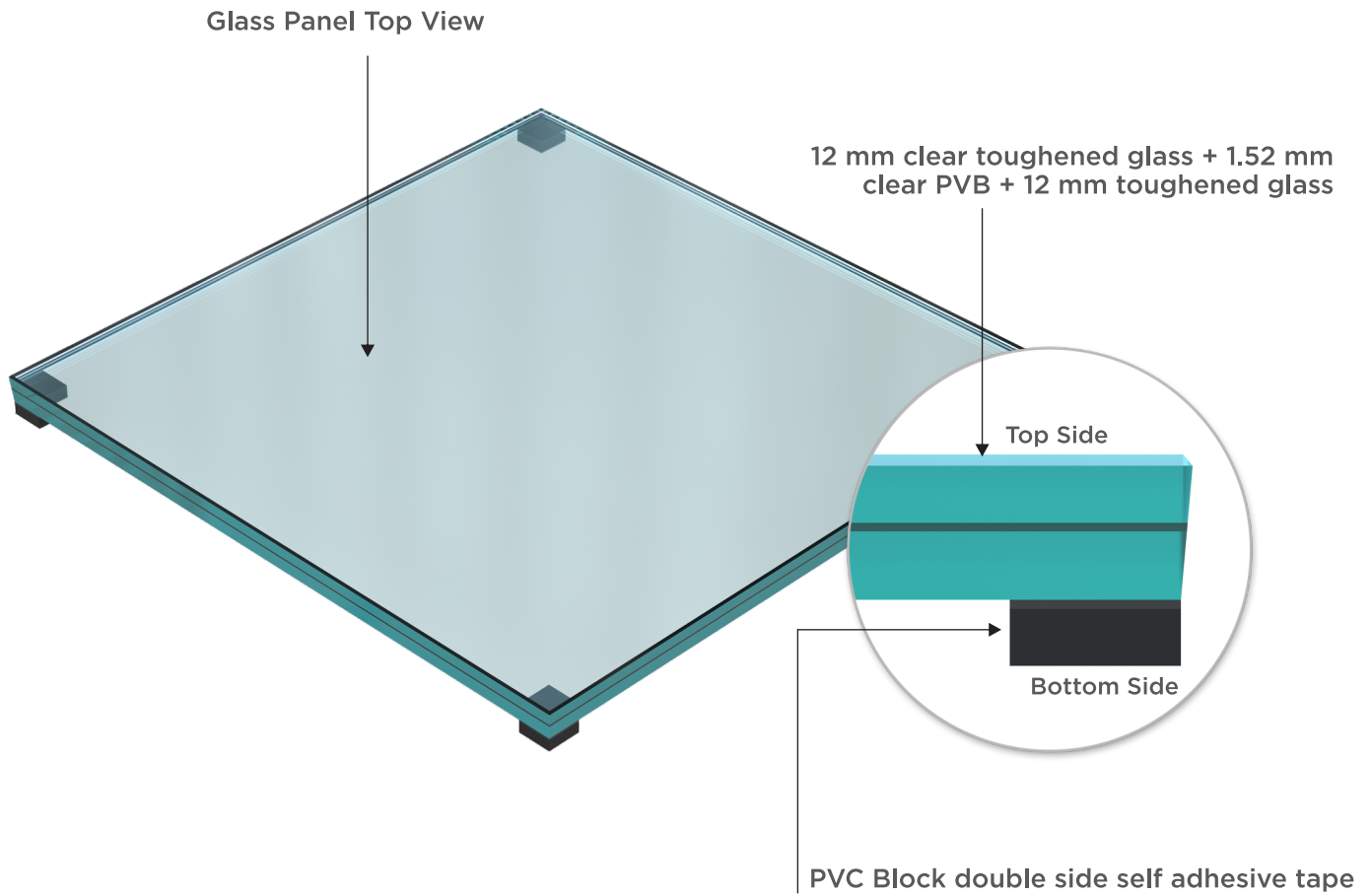
### FEATURES/BENEFITS

- ▶ Easy to clean
- ▶ Non-acrylic
- ▶ No adapters necessary
- ▶ Tempered glass/scratch resistant
- ▶ 25.52 mm Heavy Duty industrial-grade laminated toughened glass
- ▶ Designed to fit any of the Unitile raised access floor ESRG systems

### APPLICATION WITH DIFFERENT UNDERSTRUCTURES OR SYSTEMS

This panel can be installed in any of the following Unitile systems:

- ▶ USF 600 mm x 600 mm ESRG regular systems
- ▶ UCS 600 mm x 600 mm ESRG regular systems
- ▶ NGF USF 1200 mm x 1200 mm systems
- ▶ NGF UCS 1200 mm x 1200 mm systems
- ▶ Only the panel blocks which is fitted at the bottom of the vision panel is to be changed in order to make it suitable for the different system tile heights.
- ▶ The view area 600 mm x 600 mm is designed for normal human walking load.



**Please Note:**

- The above mentioned loading parameters are derived & defined on the basis of the tests performed by the manufacturer based on the guidelines provided by the specified standards or as per manufacturer's recommendations.
- Manufacturer has all the rights to change or revise the specifications as and when applicable or required without the prior notice.