



# **NEX-GEN SYSTEM**

## **RAISED ACCESS FLOOR SYSTEMS**

---

**Robust. Flexible. Resilient.**



# INDIA'S NO.1 RAISED ACCESS FLOOR BRAND



**30 Years**  
of leadership and legacy



**100 million sq. ft.**  
of workspaces transformed



**15 million sq. ft.**  
annual production capacity



**15,000+ clients**  
across the globe



**8 offices** across India



**500+ Unitilers**  
Growing with **40+ partners**



# CERTIFICATIONS



World Class  
Quality



Environmental  
Conscientiousness



Indian Green  
Building Council



Health And Safety  
Measures



Singapore Green  
Building Council  
(SGBC)



PSB Singapore

Excellence guaranteed  
With third party  
tested at TÜV SÜD PSB,  
Singapore



BUREAU  
VERITAS

Certified by  
Bureau Veritas,  
France

# UNITILE INNOVATION HUB



**2**

Factories



**GUJARAT**

India



**7,00,000 sq. ft.**

(65,032 sq. mtr.)  
Land area



**300+**

Manpower



**15 mn sq. ft.**

(13,93,545.6 sq. mtr.)  
Annual production

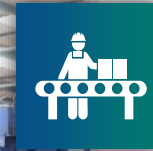


# MANUFACTURING UNIT



Our products and processes are in accordance with internationally certified standards to ensure quality and reliability to all of our customers.

---



Our processes and products are thoroughly vetted and tested to ensure that the manufactured products are meeting the desired quality standards.

---



With continuous assessment and innovation with the finest processes that satisfy the needs of the product and customer, we have been the pioneers in manufacturing of the most advanced raised access floor system.

---



# SAFE & SECURED PACKAGING & SHIPMENT

## PACKAGING



Use of shrink wrap technology to protect the panels during transit and ingress of dust and moisture.

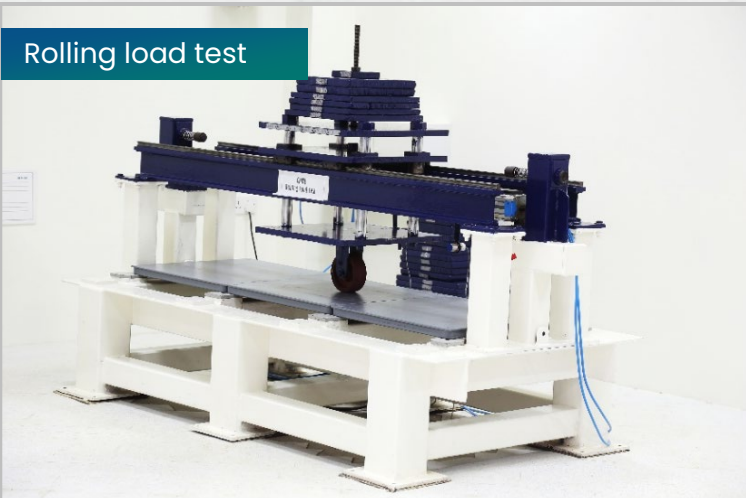
## DISPATCH



Palletizing and forklift for loading the consignment.



# THE TESTING LAB



Rolling load test



Soft body & hard body impact test



Universal load test



Edge strip and pedestal load test

---

**NEX-GEN SYSTEM**  
**(1200 mm x 1200 mm system)**

CONVENTIONAL RAISED FLOOR WOES!  
NO MORE.

---



# THE COMPLETE SOLUTION



Unitile is India's leading raised access floor brand, offers flooring systems and solutions that are preferred by the world's most prestigious brands and leading companies.

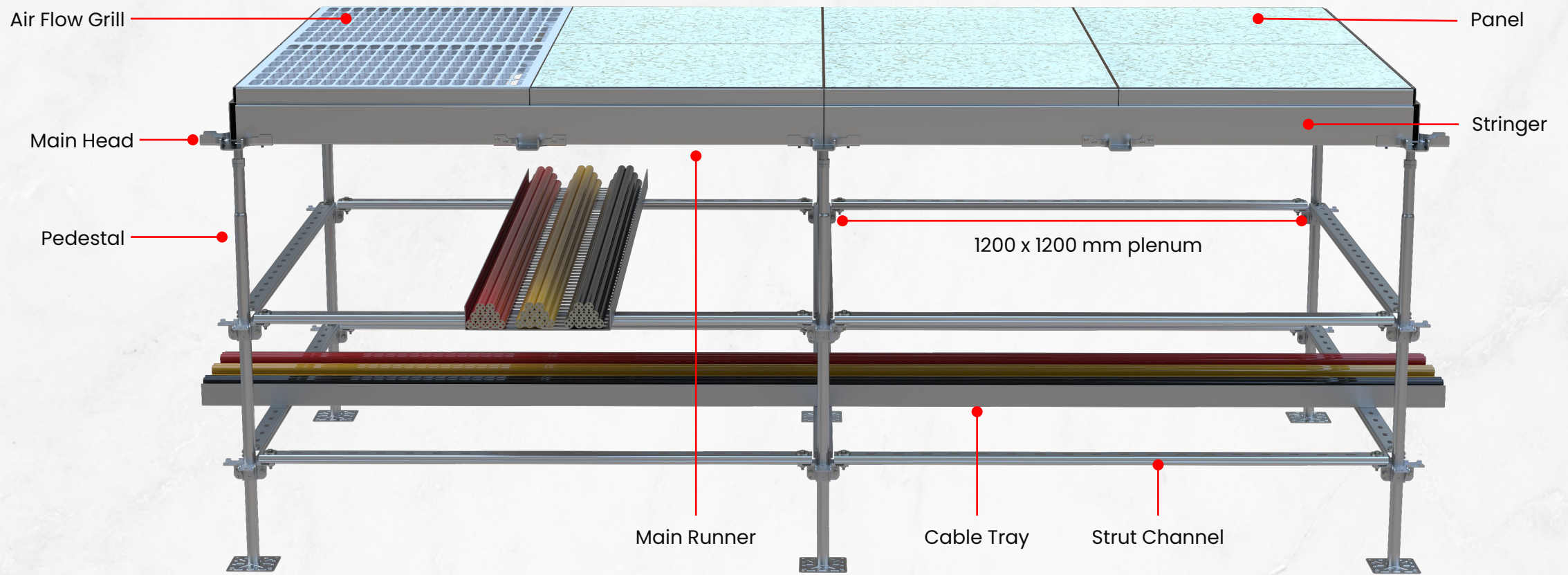


After executing several facilities around the world and with all of its inferences and learning, Unitile has developed the dynamic 'Nex-Gen System' with unique design features that allow for easy adaptation to ever-changing technological advancements, equipment densities, equipment footprint, and increased cooling demands.



Nex-Gen Floor system (1200 mm x 1200 mm) is the strongest and most flexible raised access floor available in the market, that can be adjusted to the conditions you have within your project.

# NEX-GEN DESIGN FEATURES





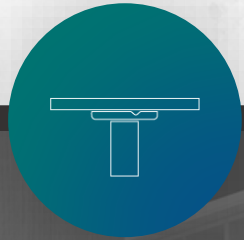


---

# **FEATURES & BENEFITS**

---

# A PERFECT FLOORING PARTNER



Superior  
Strength with  
high-grade  
steel  
understructure



Upto 70% less  
pedestals  
required than a  
conventional  
600x600mm  
grid flooring  
system



Enables  
maximum  
space  
utilization and  
unparallel  
unobstructed  
plenum access

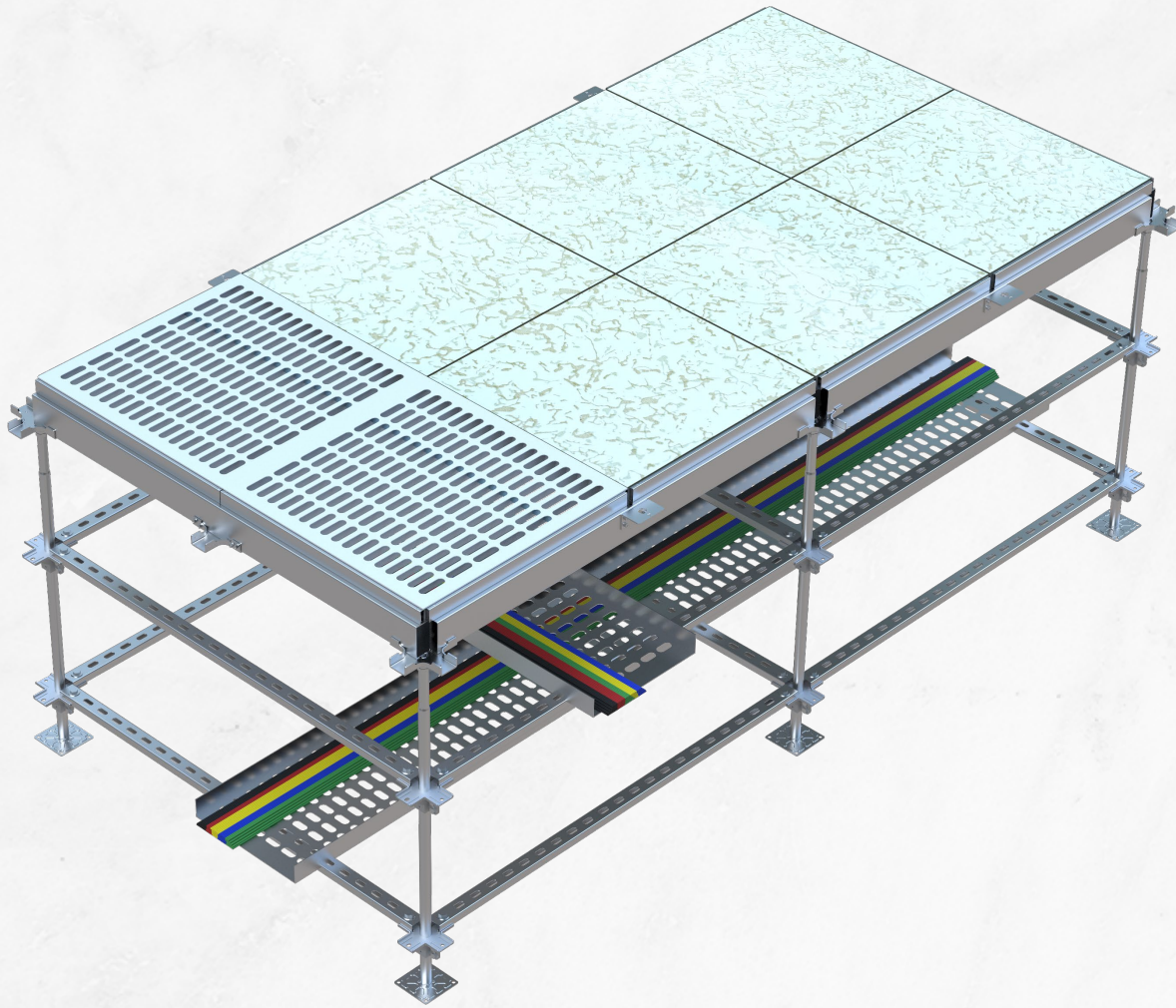


7.01 times more  
beam support  
enhances the  
stability and  
integrity of the  
system



Ease of future  
equipment  
expansion and  
layout changes  
within the  
existing floor  
design





## SUPERIOR STRENGTH

Nex-Gen Floor system (1200 mm x 1200 mm) with its unique design is the strongest and yet most flexible raised access floor system which can be adapted for all types of data centers.



High-grade steel under structure offers superior strength



Sub-structure uniform load ratings of up to 2000 kgs/m<sup>2</sup>

## WIDER SYSTEM

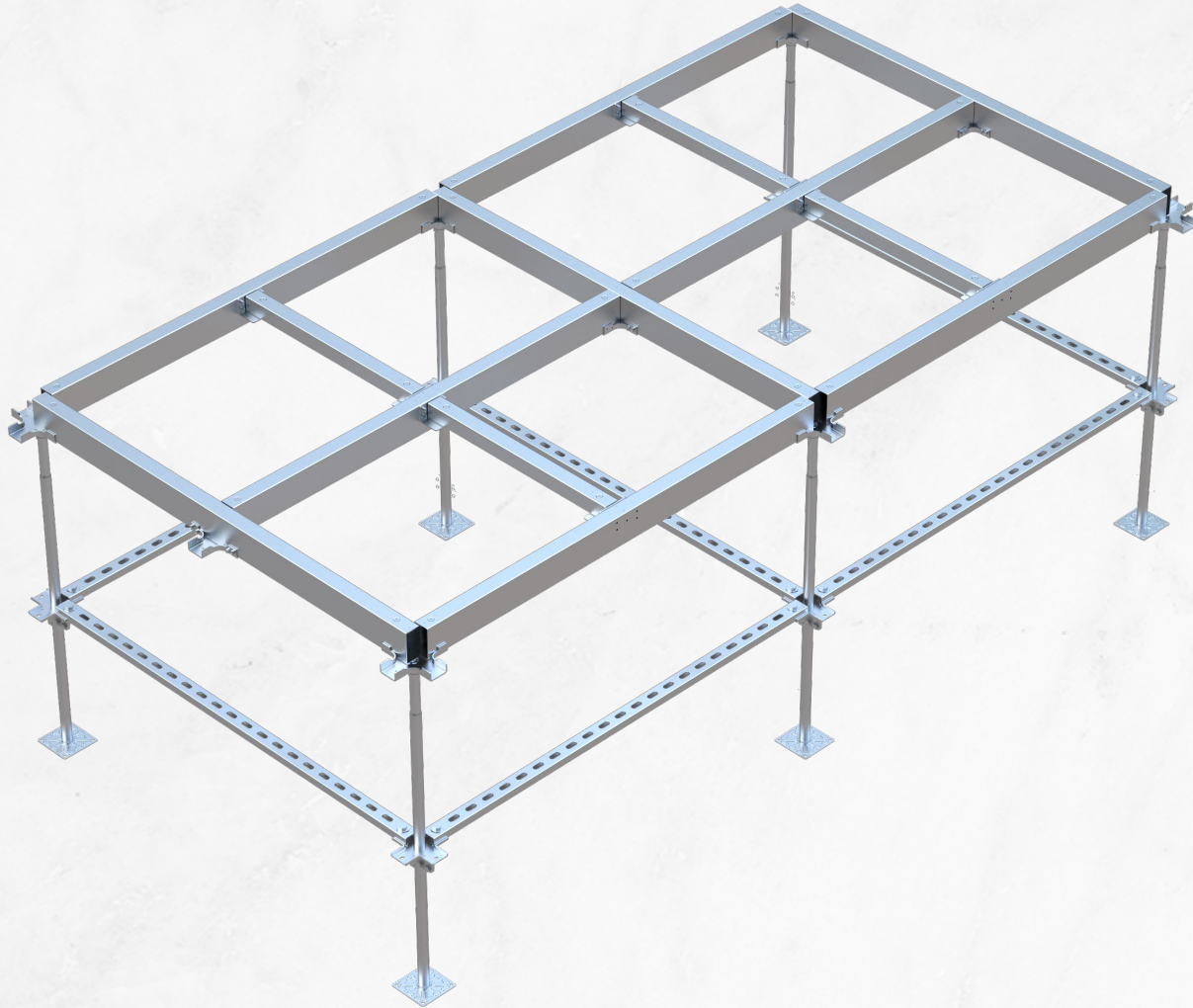
Ensures maximum space utilization and unparalleled unobstructed plenum access.



Finished floor heights ranging from 450-2000 mm



Pedestal layouts with as much as 1200 mm on center offer greater utility aisles and cableways in the plenum



## FLEXIBLE SYSTEM

The system seamlessly allows for optimization of the space enabling future rebuilding without having to reconstruct the entire substructure.



No expensive bridging required due to flexible pedestal placement



Ensures the lead times and unnecessary expenses are reduced

## COMPLIANCE

Tested and approved in accordance with:



CISCA (USA) and EN-12825 (EU) & MOB-PF2 (UK)



All floor components are factory pre-galvanized



The entire system is fully earth connected



**300%  
MORE  
SPACE**



## **SEAMLESS EXECUTION (75% less pedestals)**

Unique flexibility that easily enables future expansion and reconstruction. Can deploy USF, UCS, (600 x 600 mm and 1200 x 1200 mm) system, laying in any direction



Up to 70% less pedestals required compared to conventional 600 x 600 mm grid floors

Dimensions:

- 600 mm x 600 mm - 0.36 sq. mtr.
- 1200 mm x 1200 mm - 1.44 sq. mtr.



Less obstruction and more space for cable management



Other service vendors can seamlessly work without obstruction and disruption



## MAX SUPPORT & RIGIDITY

Can be installed in two deployments due to the rigid and self-supporting steel substructure, the panels can be installed at a later stage.



The components of the system including equipment frames are multipurpose



Can be adapted to mitigate the short fall and replacement during design changes, re-location and urgencies at site

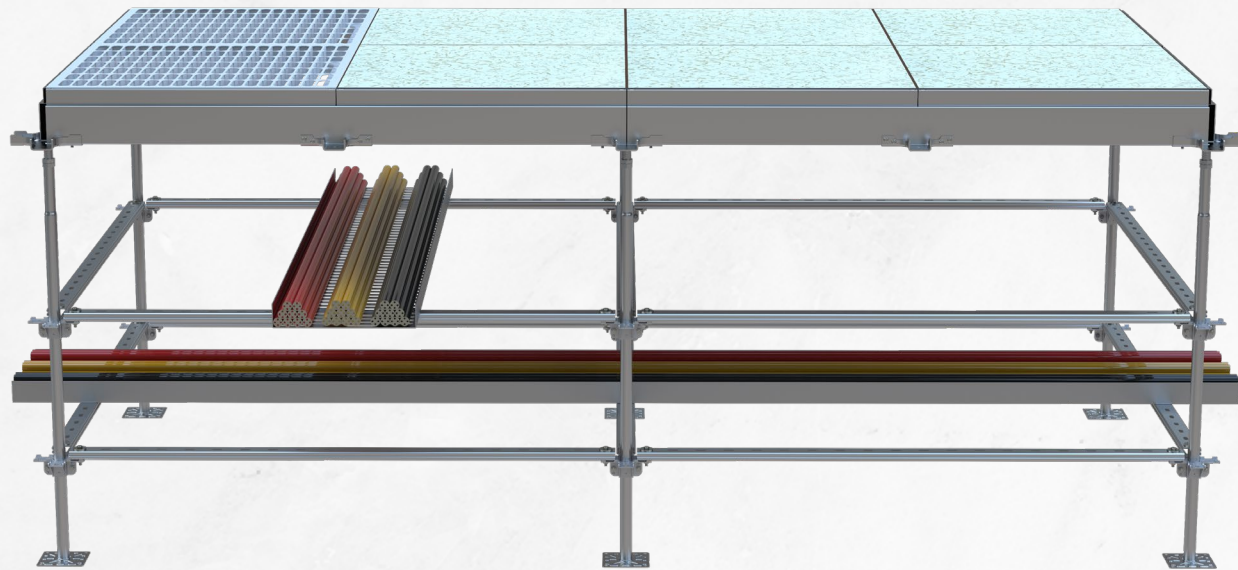


No other raised floor system offers this value-added feature

## SUPPORTS AIRFLOW

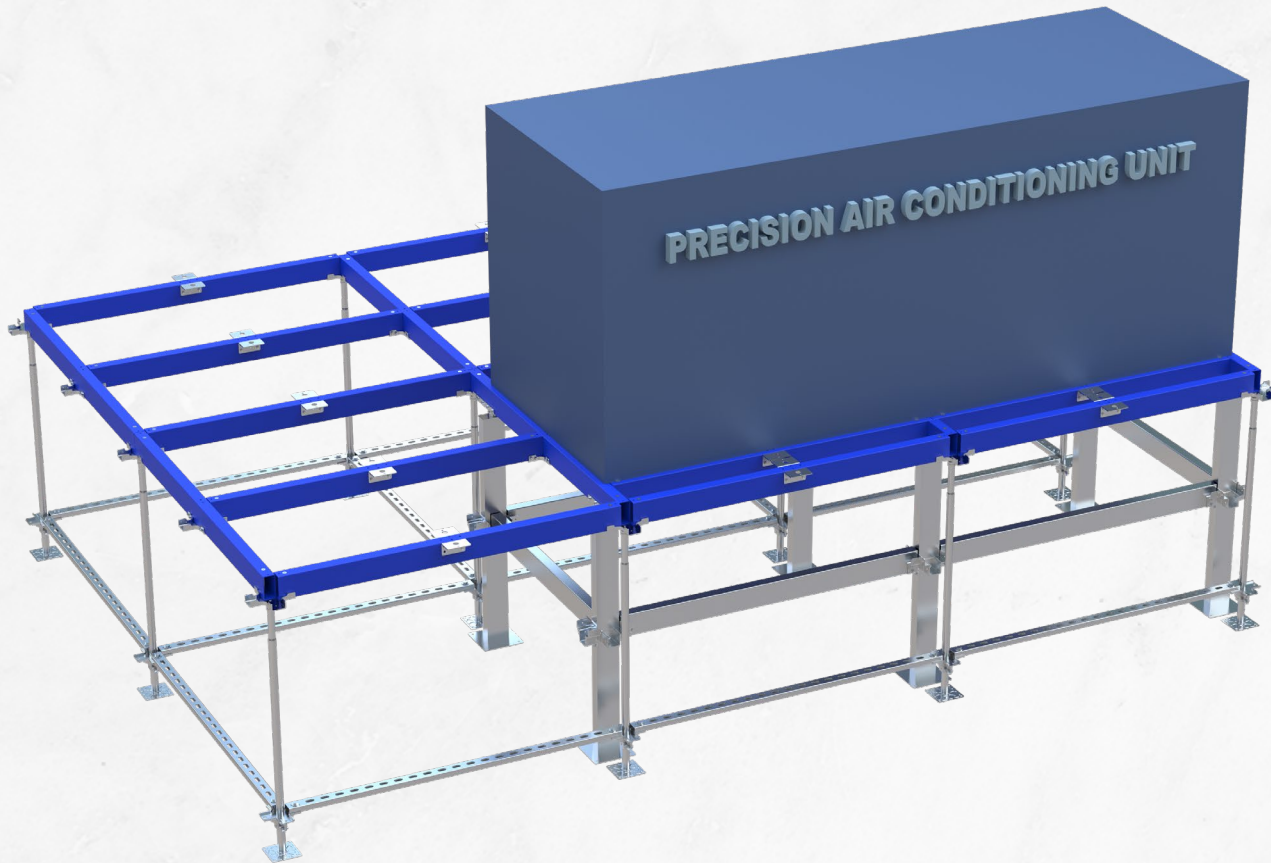
Ensures maximum cooling by supporting airflow panels with upto 80% opening.





## **CABLE TRAY MANAGEMENT SUPPORT SYSTEM**

Uniquely designed and custom build fully modular integrated cable tray management support system, not only supports under floor services but laterally braces the entire system together to make it more robust and ridged yet fully flexible and re-locatable.



## ROBUST STRUCTURE

Integrated partition system below the Precision Air Conditioning (PAC) units / Precision Air Handling Unit (PAHU) / Computer Room Air Conditioning (CRAC) unit frame to seal the area below the unit to arrest air leakage and maximize airflow direction to the desired location of the facility.

The robust, self-supporting steel structure can accommodate all heavy equipment, including PDUs and CRAH units. No additional, heavy, and expensive steel frames are required.

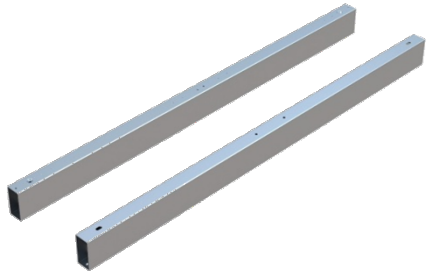




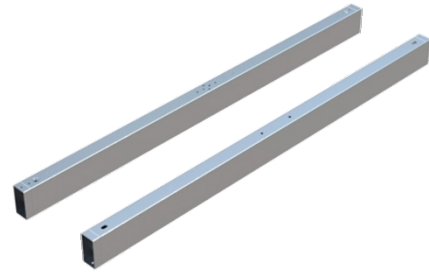
**KEY COMPONENTS OF NEX-GEN SYSTEM**

# COMPONENTS

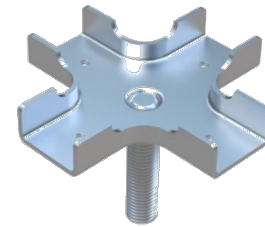
**Main runner**



**Secondary runner**



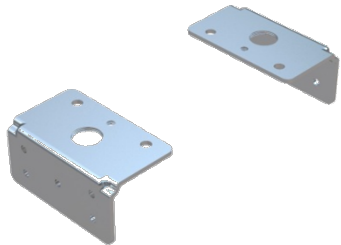
**Pedestal head**



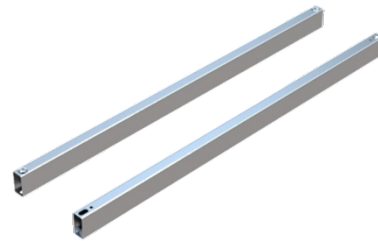
**Pedestal base**



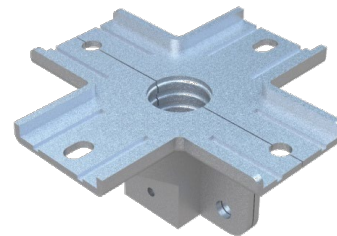
**Universal bracket for secondary runner**



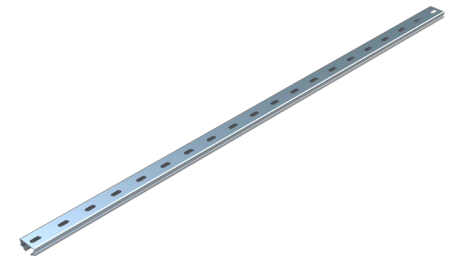
**Stringer for main runner**



**Head for cable tray support system**



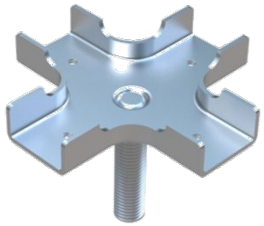
**Strut channel slotted**



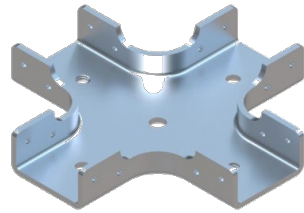


# COMPONENTS

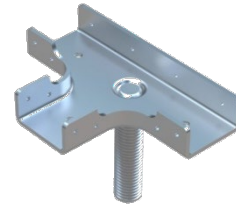
**Suspended head  
with stud**



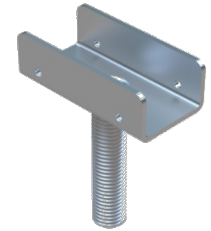
**Suspended head**



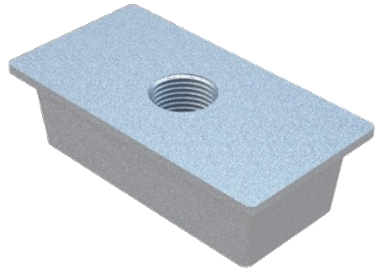
**Perimeter head  
with stud**



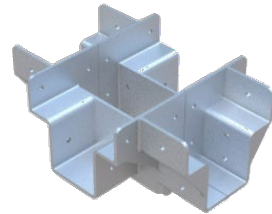
**U Head**



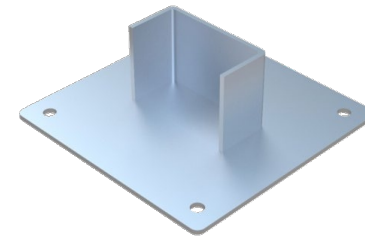
**Sleeve for NGF**



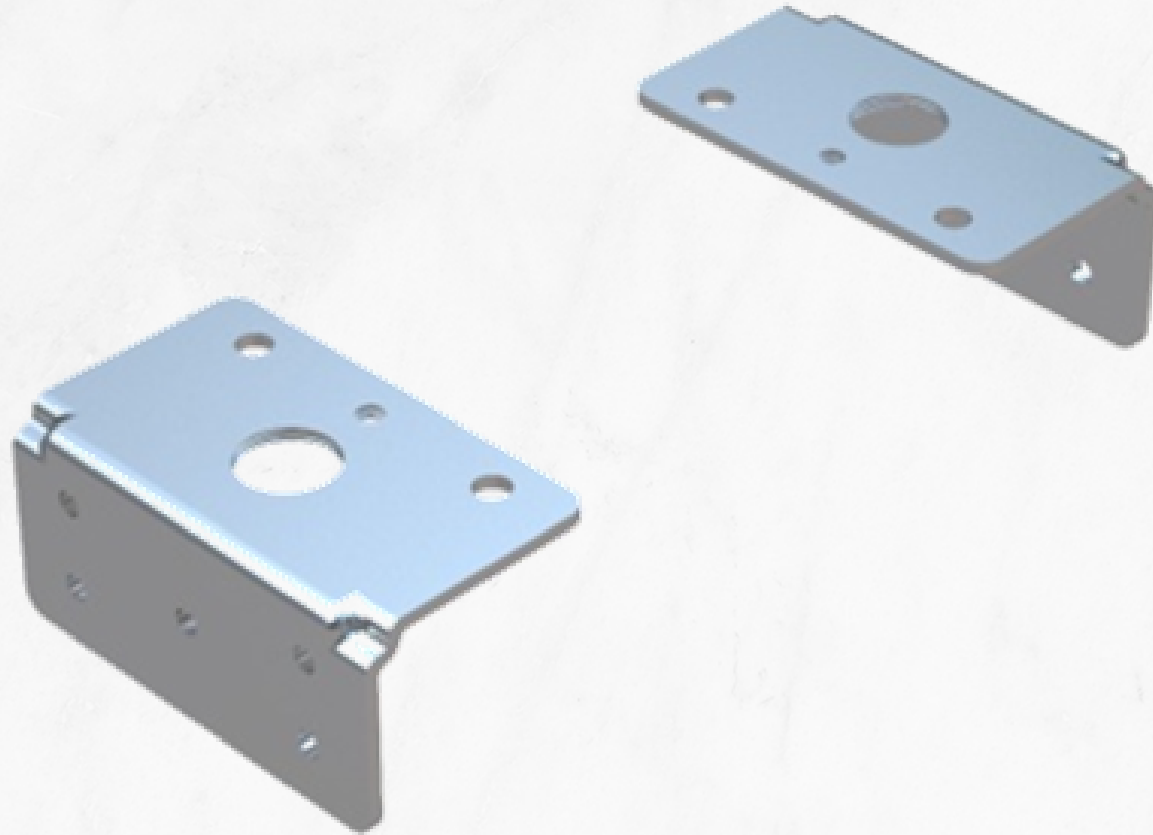
**Bracket for runner**



**Base plate**



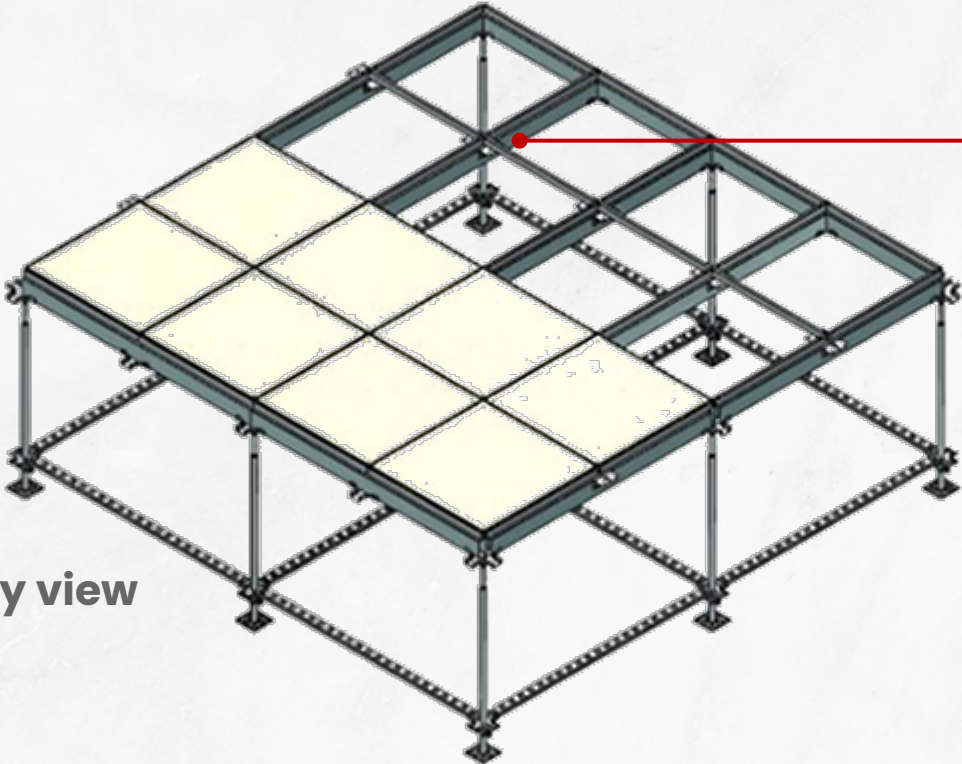
# UNIVERSAL BRACKET



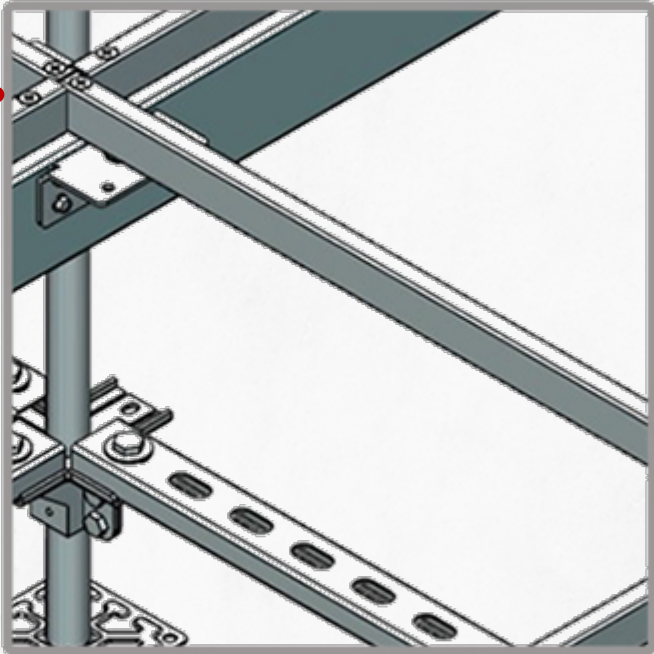


# UNIVERSAL BRACKET

Application 1: Stringer support for USF system



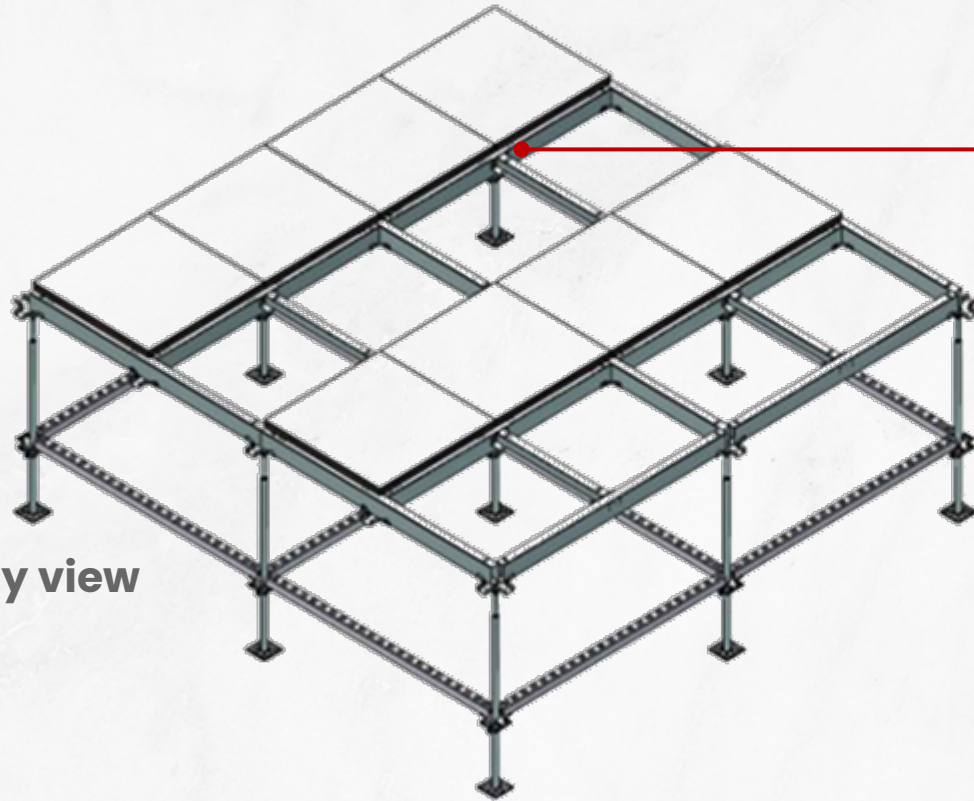
Assembly view



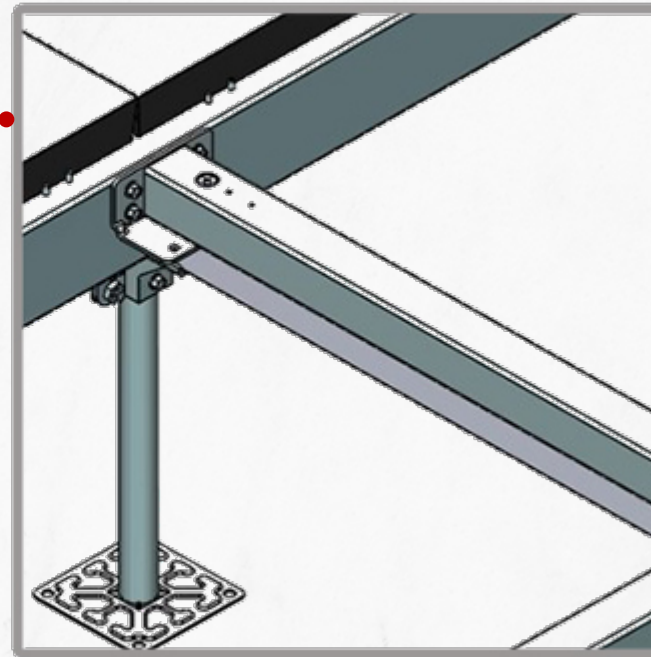
Detailed view

# UNIVERSAL BRACKET

Application 2: Third runner (SSR) support for UCS system



Assembly view

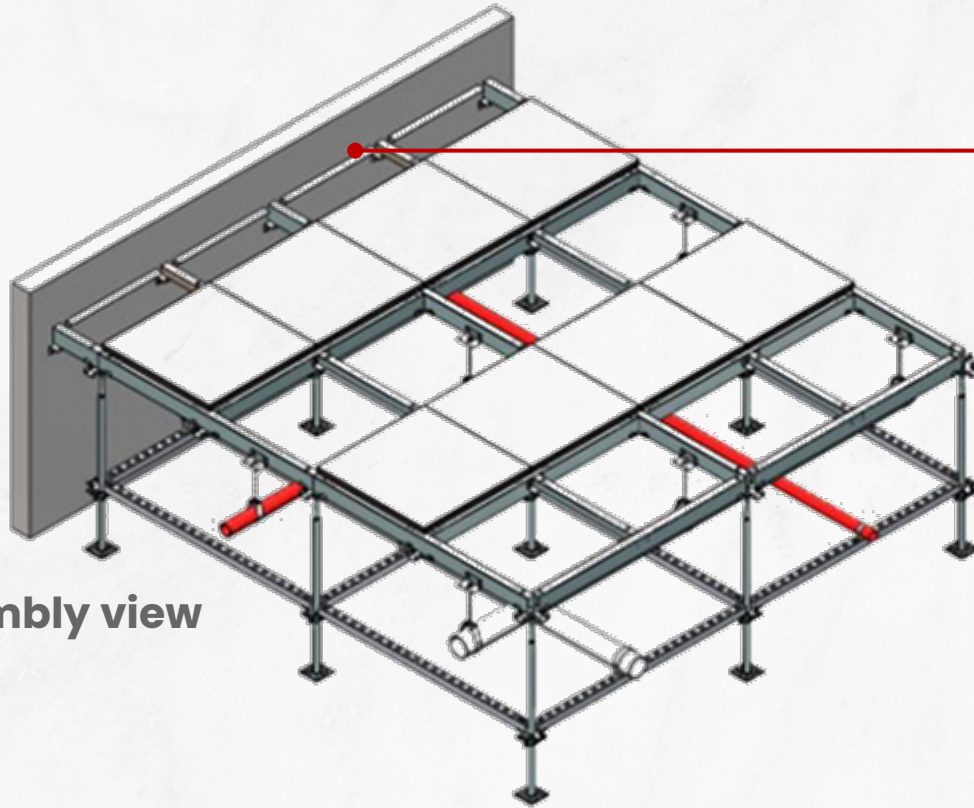


Detailed view

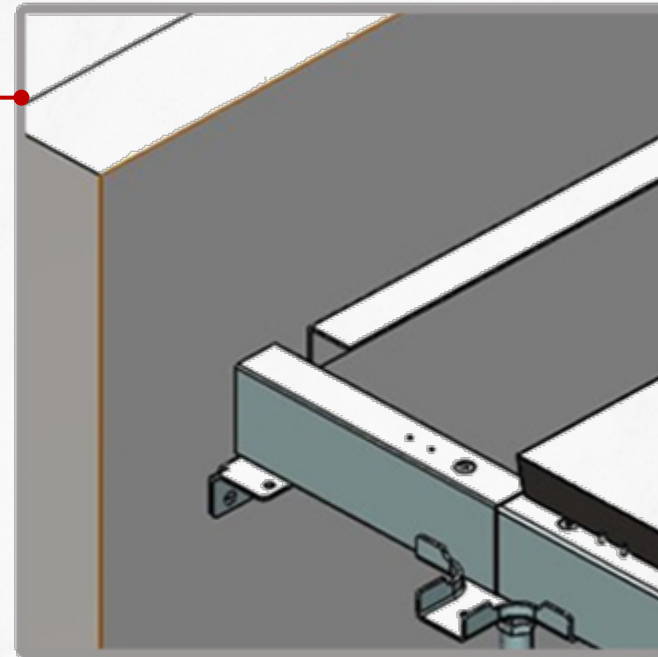


# UNIVERSAL BRACKET

Application 3: Runners support for perimeter side



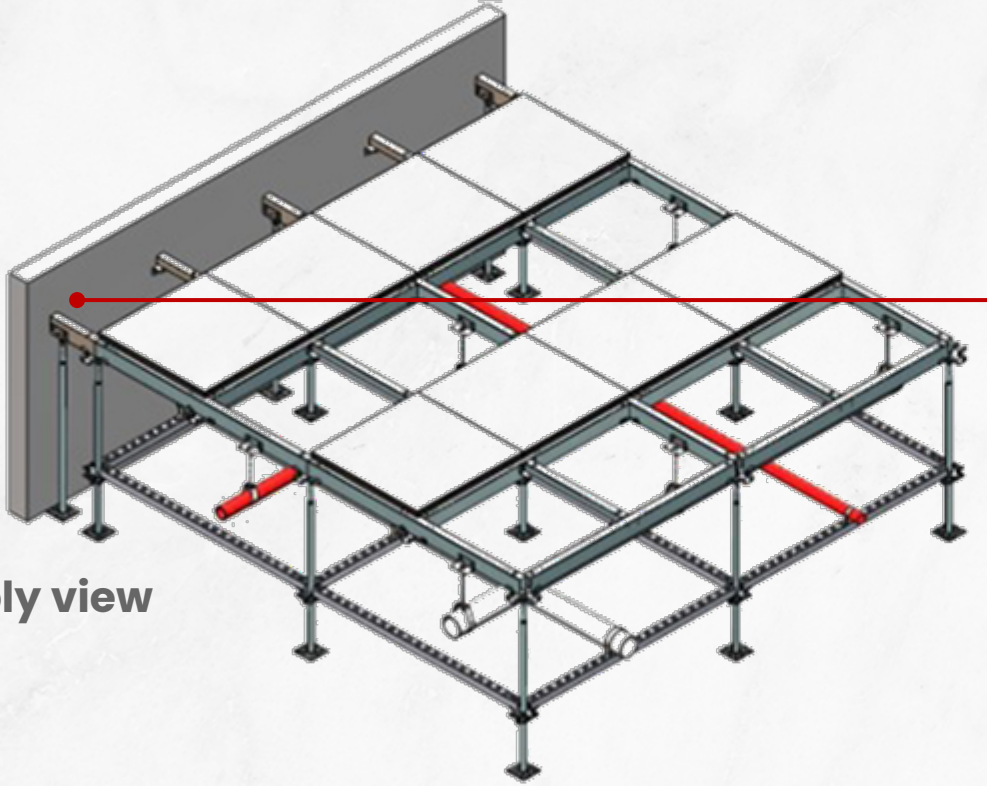
Assembly view



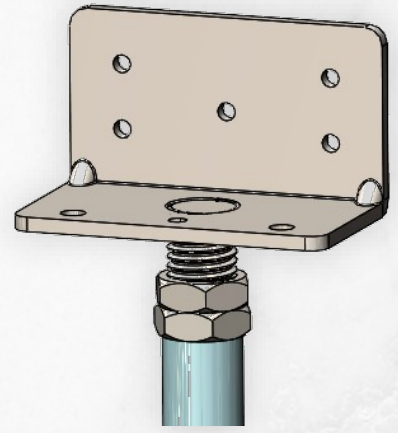
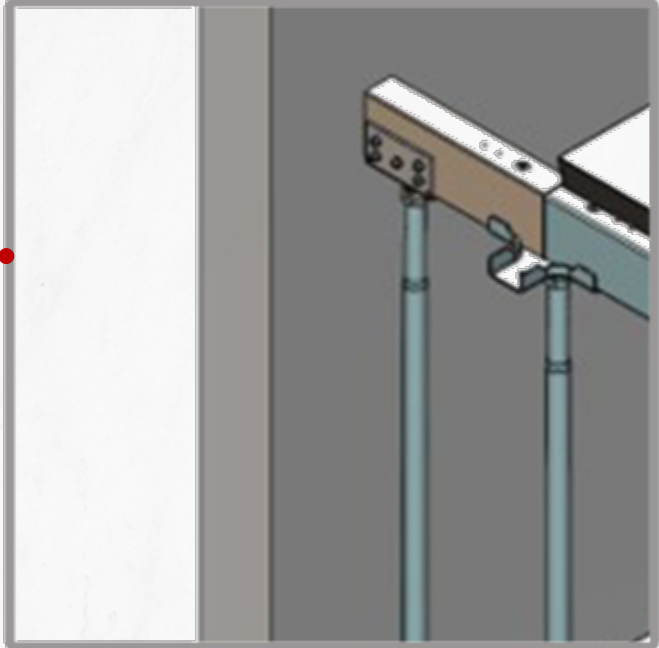
Detailed view

# UNIVERSAL BRACKET

Application 4: An alternate to pedestal head at perimeter location



Assembly view

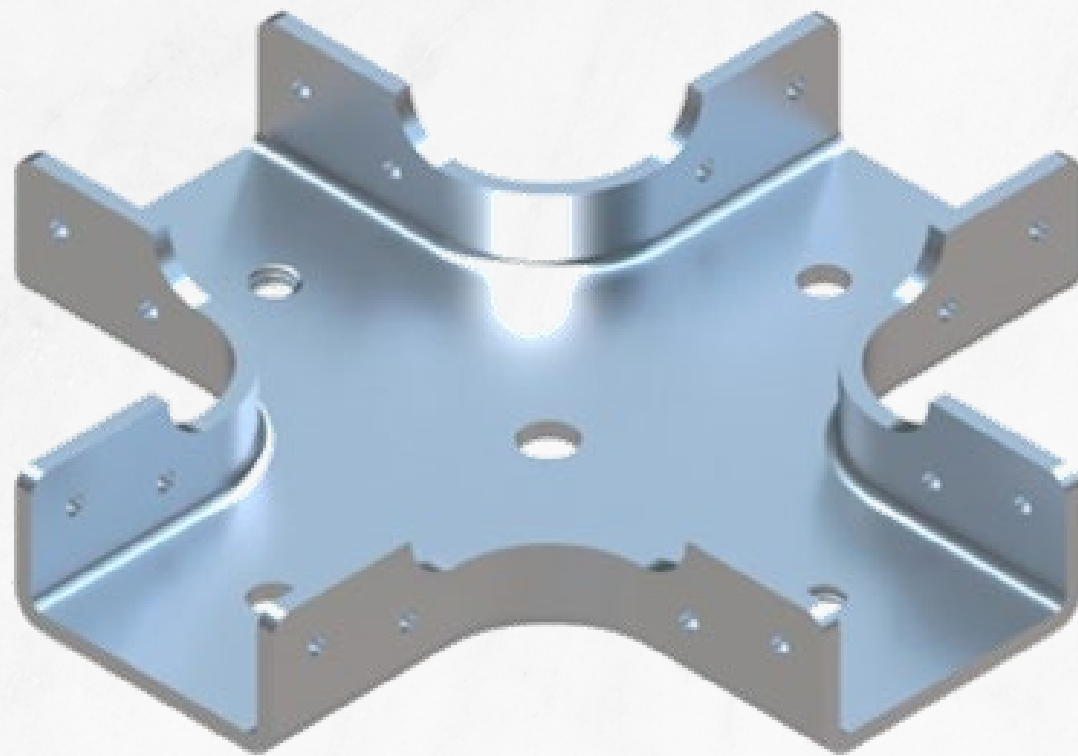


Bracket Pedestal

Detailed view

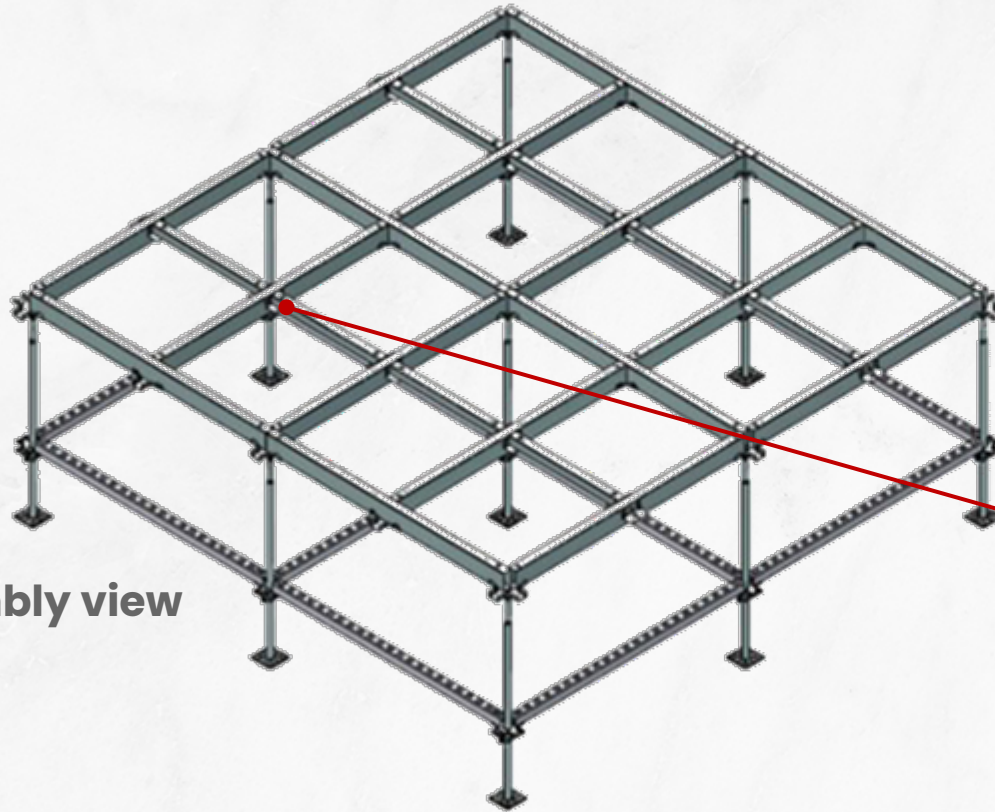


# SUSPENDED HEAD

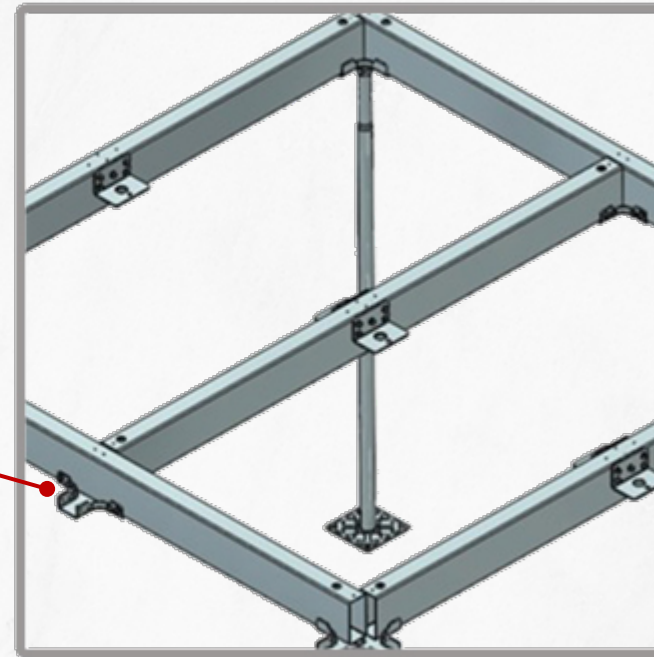


# SUSPENDED HEAD

Application 1: Secondary Runner Support



Assembly view

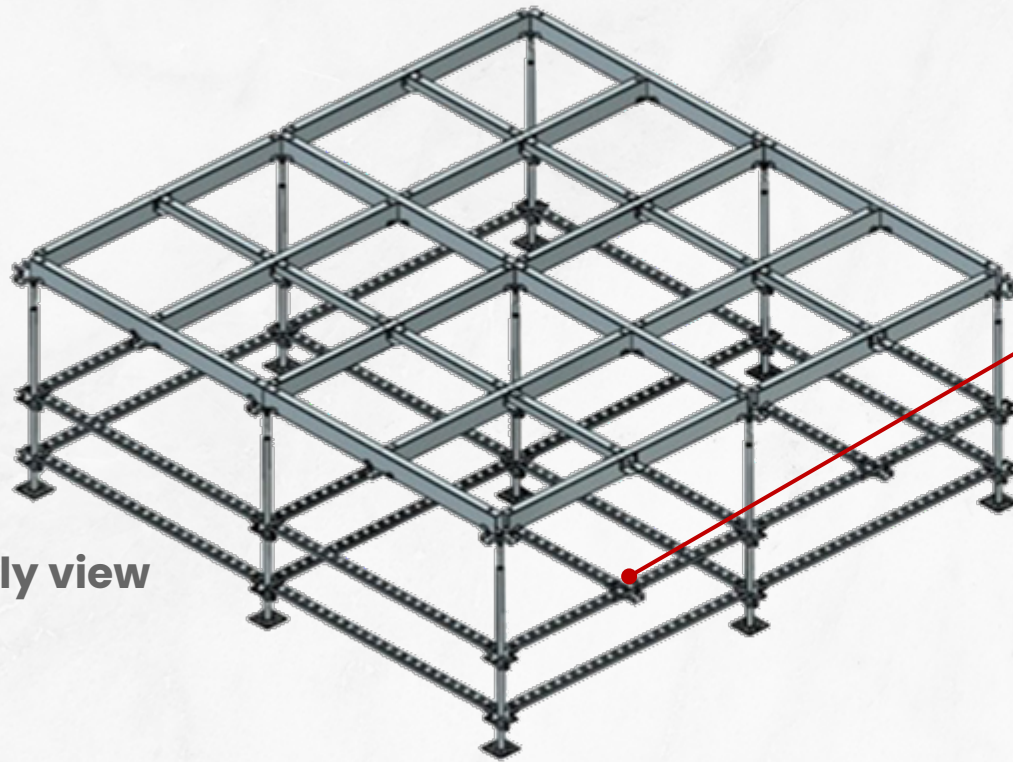


Detailed view

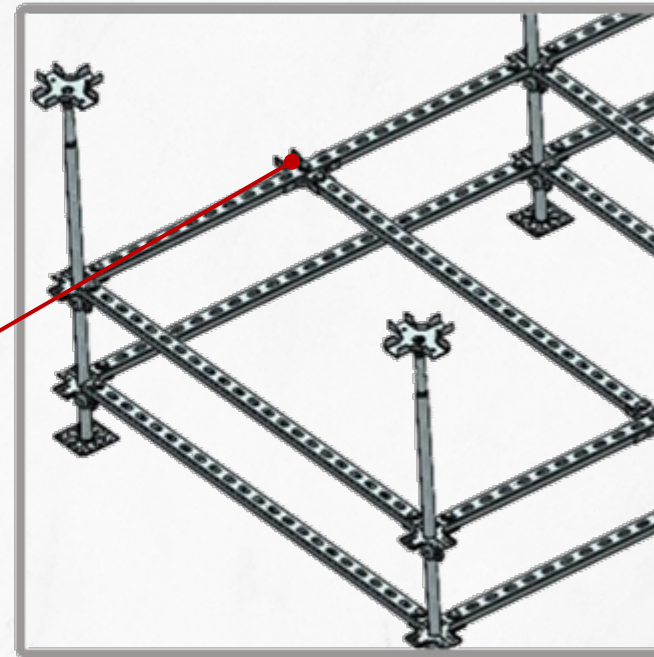


# SUSPENDED HEAD

Application 2: Support to Strut Channel for 600mm Grid



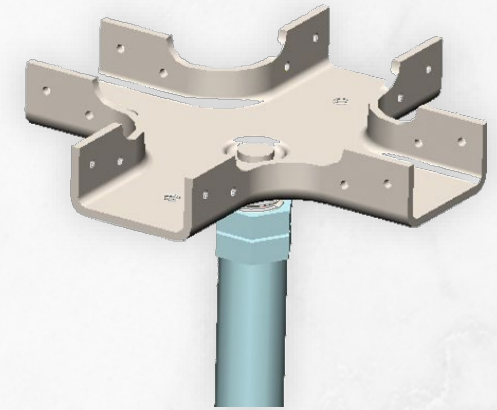
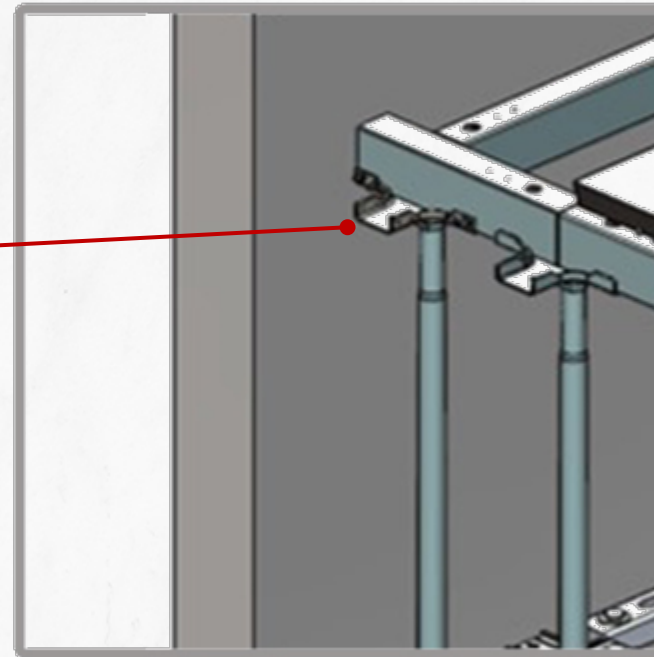
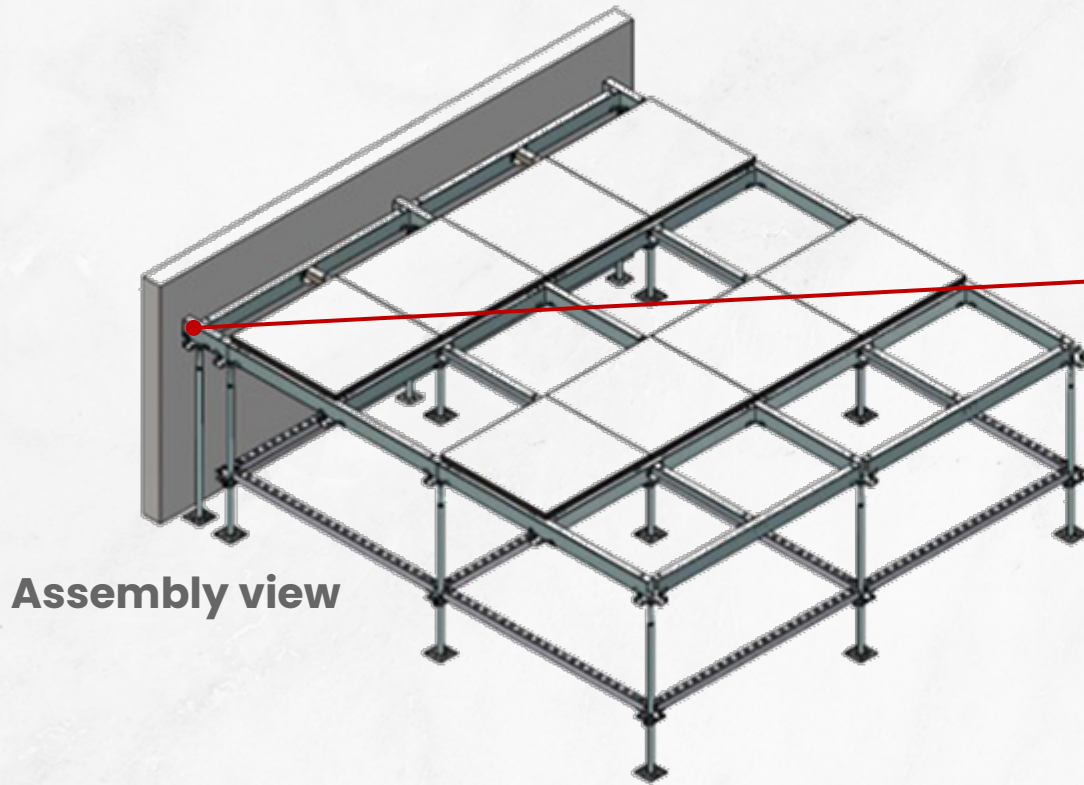
Assembly view



Detailed view

# SUSPENDED HEAD

Application 3: An alternate to pedestal head at perimeter location

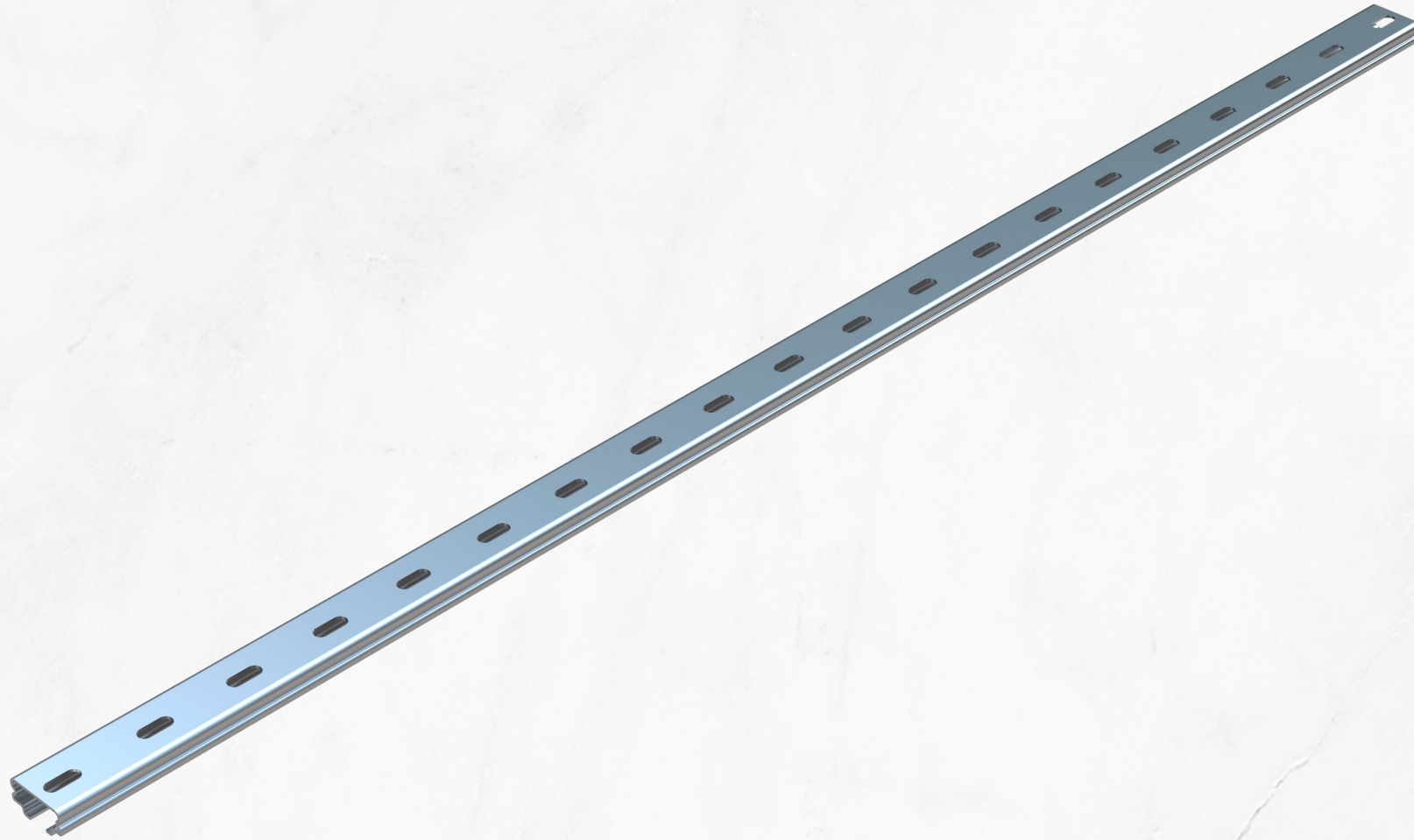


Bracket Pedestal

Detailed view

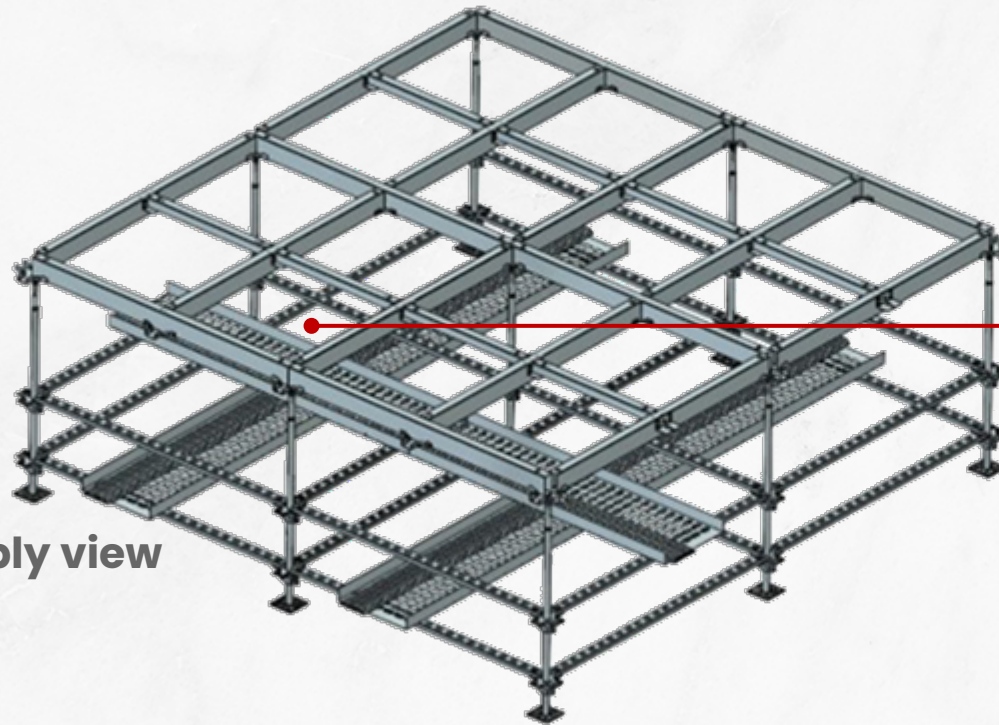


# STRUT CHANNEL

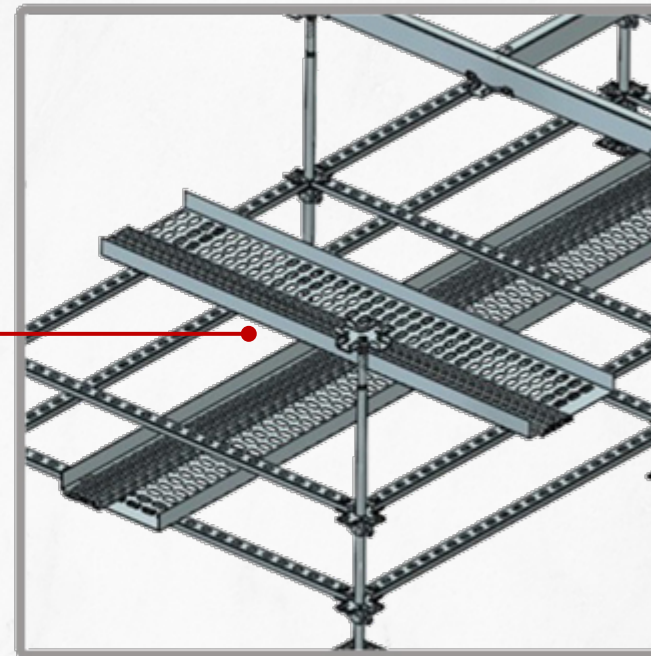


# STRUT CHANNEL

## Application 1: Cable Tray Support



Assembly view

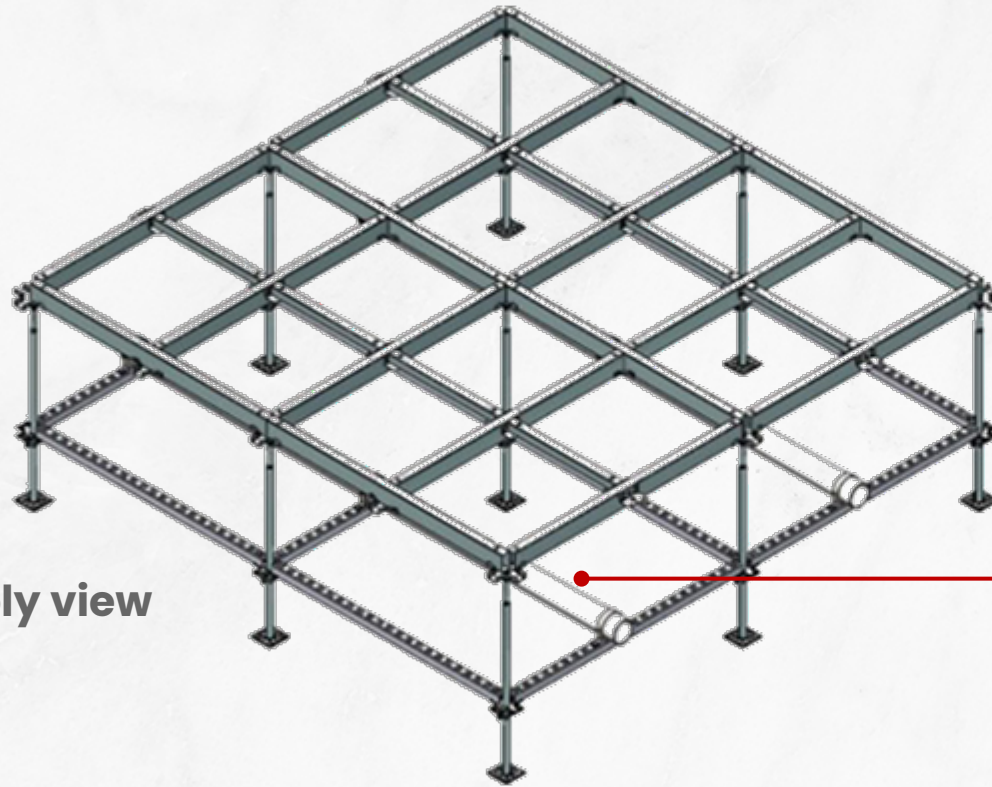


Detailed view

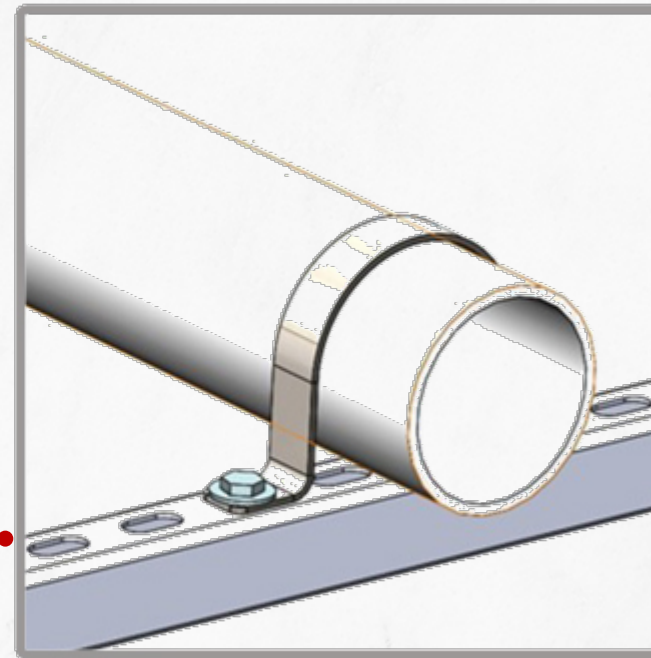


# STRUT CHANNEL

Application 2: Water/Drain Pipe/ Fire Hydrant Pipe Support



Assembly view



Detailed view



---

# TEST REPORT

---



The Nex-Gen System  
is compliant with  
Seismic Compliance  
System Code CPRI.

CENTRAL POWER RESEARCH INSTITUTE



CPRI

TEST REPORT

Test Report Number : EVRC.EEL.MISC.050.1617 Date: 30.12.2016

Name and Address of the Customer : M/s. United office systems private limited  
Survey No. 62/1P, 1, 2 & 3. Village – Vankas,  
Taluka – Umbergaon, Valsad – 396 150.Gujarat  
Reference : Customer Request Form, Dated 20.12.2016

Name and Address of the Manufacturer : M/s. United office systems private limited  
Survey No. 62/1P, 1, 2 & 3. Village – Vankas,  
Taluka – Umbergaon, Valsad – 396 150.Gujarat

Particulars of Sample Tested : Raised access floor system unitile solid filled panel  
Condition of Sample on Receipt : New  
Type : -  
Description of Test Sample : Raised access floor system unitile solid filled panel  
Serial Number : Prototype  
Number of Samples Tested : One set  
Date(s) of Test(s) : 20.12.2016  
CPRI Sample Code No(s). : EVRCEELMISC1617S0079

Particulars of Tests Conducted : a. Resonance Search Test and  
b. Seismic Test

Test in Accordance with Standard / Specification : Nil

Sampling Plan : Not applicable  
Customer's Requirement : Yes, Design spectrum as per IS 1893 (Part 1) – 2002, Zone IV  
(Soft soil site condition)

Deviations if any : Nil

Name of the Witnessing Persons : Mr. Ravi kumar Vasudevan, Mr. Soumendra Rour, Mr. Upendra  
Customer's Representative : Potdar and Mr. Kanna S. Kumar

Other than Customer's Representative : Nil  
Test Subcontracted with Address of the Laboratory : None

Documents Constituting this Report

Number of Sheets : Seventeen  
Number of Oscillogram/s : Nil  
Number of Graphs : Twenty three  
Number of Photos : Three  
Number of Test Circuit Diagrams : Nil  
Number of Drawings : Eleven

  
(A. N. N. Nampoothiri)  
Test Engineer



  
(R. Panneer Selvam)  
Joint Director

Sheet 1 of 17



**QUICK AND EASY INSTALLATION**



# QUICK & EASY INSTALLATION



Every project is designed and communicated with the client to simplify the installation stage.



All pedestals needed for your floor height are fabricated and engineered with pre-assembled components to the correct length based on approved project drawings if needed. This provides a quick and easy installation.



Faster Two-Step Installation:

**First Stage:** Without panels, this provides opportunities for other subcontractors to do their installations before floor panels are installed.

**Second Stage:** Other sub-contractors can utilize the Nex-Gen floor substructure to support cable management, fire suppressant, etc. These installations can be attached to the floor's sub-structure using Unitile's quick mounting cable tray support system.














---

# KEY PROJECTS

---



# KEY PROJECTS

	<b>6,48,683</b> sq. ft.		<b>3,73,442</b> sq. ft.		<b>2,30,588</b> sq. ft.		<b>2,30,565</b> sq. ft.
	<b>2,22,302</b> sq. ft.		<b>1,19,685</b> sq. ft.		<b>1,19,620</b> sq. ft.		<b>23,428</b> sq. ft.
	<b>21,137</b> sq. ft.		<b>1,674</b> sq. ft.		<b>856</b> sq. ft.		



# OUR PRESENCE

## INDIA

Ahmedabad | Ankaleshwar | Aurangabad | Bareilly | Bengaluru | Chandigarh | Chennai | Cuttack | Goa | Gurgaon | Guwahati | Hyderabad | Indore | Jaipur | Kanpur | Kolkata | Lucknow | Mumbai | Nagpur | New Delhi | Pune | Raipur | Thane | Vadodara | Thiruvananthapuram | Cochin

## INTERNATIONAL

Azerbaijan | Bahrain | Bangladesh | Egypt | Hong Kong | Indonesia | Kenya | Nepal | Oman | Philippines | Qatar | Saudi Arabia | Singapore | Sri Lanka | Tanzania | Turkey | UAE | Vietnam | Maldives | Nigeria | Bhutan | South Africa

