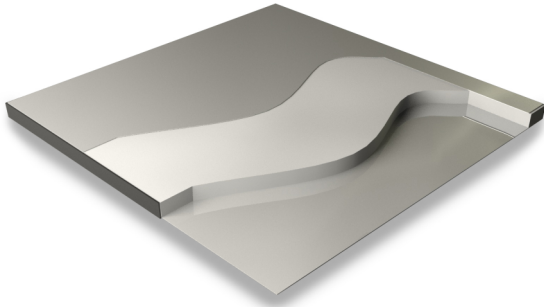


UNITILE CALCIUM SULPHATE (UCS) GRAVITY LAY SYSTEM

PANEL ILLUSTRATION



Category	Bare, Gravity Lay System
Panel size	600 x 600 mm
Core Material	Calcium Sulphate
Panel Core Thickness	28 mm
Overall Floor Height	65 mm - 300 mm

FEATURE BENEFITS

- ▶ High strength to weight performance.
- ▶ Excellent fire resistance properties tested as per Class O and Class 1 standards.
- ▶ Precision in floor levels and positive alignment with the understructure.
- ▶ Good acoustical properties.
- ▶ Unique In-built stringer design.
- ▶ 90-97% UCS panels can be recycled at the end of their life.

PANEL CONSTRUCTION

The UCS floor panel is manufactured from fiber reinforced calcium sulfate, which forms the core of the panel. Non-combustible high quality alpha-hemihydrate single pressed gypsum and non-toxic unbleached cellulose fibers are used as reinforcing material. The core is manufactured using a unique technique of compressing multiple layers of natural gypsum to guarantee homogenous density across the panel and have high resistance to water absorption.

The top & bottom surface of the core is fully bonded and laminated by GI sheet respectively & then trimmed to fine dimensional tolerances for modular control, accurate alignment of the grids, interchangeability of panels and prevention of creep. The design incorporates a full depth ABS edge band, which while providing total encapsulation of the calcium sulphate core also protects the edge of the surface covering and resists ingress of moisture.

SYSTEM DESCRIPTION

PANEL:

Unitile Calcium Sulphate (UCS) access flooring system is manufactured using calcium sulphate core of 28 mm thickness having a very high density of Natural gypsum. The panel is designed in a way it offers excellent acoustical sound deadening value, also offers a high degree of walking comfort ensuring perfect working environment. The panel also possesses electrostatic characteristics.

The panels are designed with pre-engineered cavity on all four corners to inter-lock with the pins on the cap that leads to positive engagement between the pedestal and access floor panel. The factory-engineered Inter-locking design of the panel and the cap enables positive alignment of the floor without any efforts during the installation and frequent access during service.

PEDESTAL:

The pedestal assembly shall provide easy adjustment of leveling and accurately align panels for a maximum ± 25 mm in the vertical direction. The Pedestal head assembly shall consist of embossed head mechanically riveted to a rolled formed stud and 2 check nuts for level adjustment and arresting vertical movement. The pedestal head shall consist of an anti-vibration conductive cap with inbuilt isolating spacers for panel and stringer location.

APPLICATIONS

- Open office

FACTORY BONDED FINISHES

- Galvanised finish

SPECIAL APPLICATIONS

Bridging Sections	Where obstructions prevent the use of pedestals
Ramp Pedestals	Pivot head pedestal to support angled ramp panels

UNITILE CALCIUM SULPHATE (UCS) GRAVITY LAY SYSTEM

PRODUCT STRUCTURAL PERFORMANCE

(As per BSEN 12825)

CLASSIFICATION	DEFLECTION	CONCENTRATED LOAD
Class A	2.5 mm	608 Kgs / 5.96 KN
Class B	3.0 mm	684 Kgs / 6.70 KN
Class C	4.0 mm	828 Kgs / 8.11 KN

PRODUCT STRUCTURAL PERFORMANCE

Ultimate Concentrated Load	1837 Kgs / 18.00 KN
Uniformly Distributed Load (UDL)	1377 Kgs / m ²
Pedestal Axial Load Test	22 KN
Pedestal Over Turning Moment Test	113 N x Meters

OTHER STRUCTURAL PARAMETERS

Soft body impact	Tested as per (T12.03) of MOB PF2 PS Standards
Hard body impact	Tested as per (T12.03) of MOB PF2 PS Standards
Fire Rating	Class O & Class 1, as per BS 476 Part 6 (Fire Propagation) & 7 (Surface spread of flame). Rated REI 30 as per 1366-6 under BSEN 13501-2.

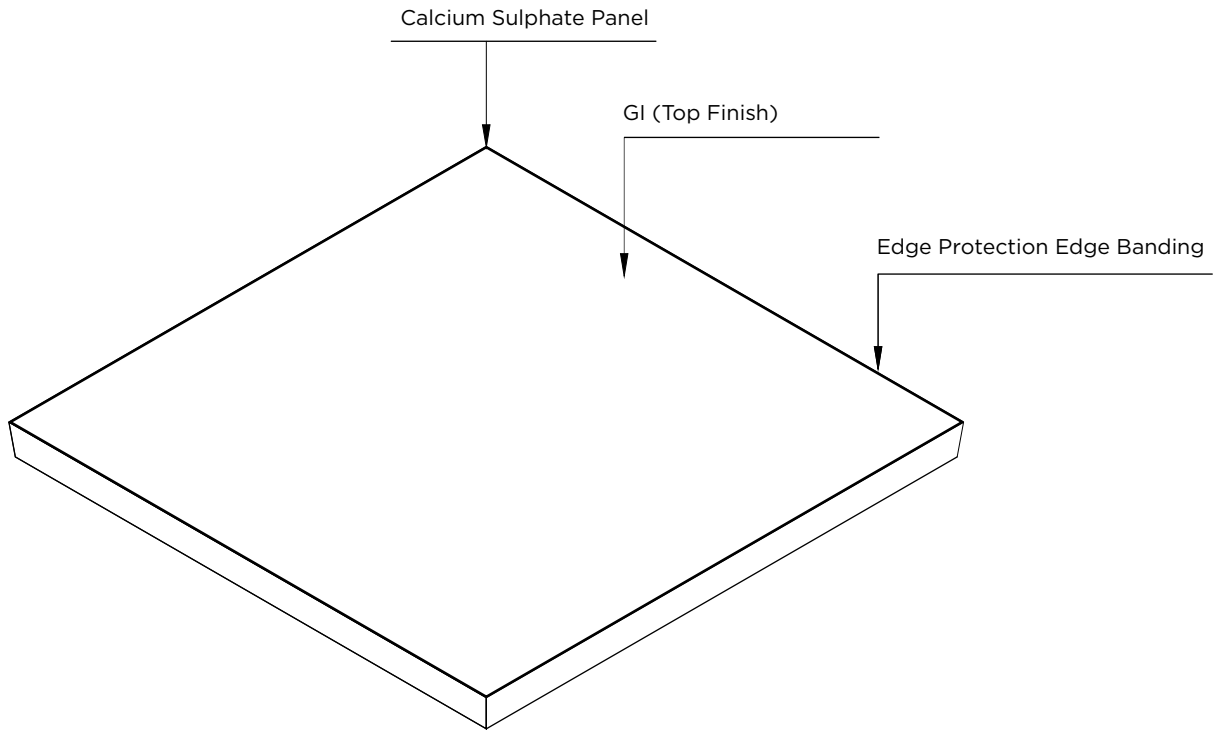
INSTALLATION TOLERANCE

Overall level before application of any load	± 1.5 mm over any 5.00 sq mt. ± 6 mm over any size of basic space
Panel Level	+ 0.75 mm before the application of any load.
Panel Interchangeability installation and removal	Interchangeable (except for field cut panels) & replaceable in any of the four directions at 90° increments

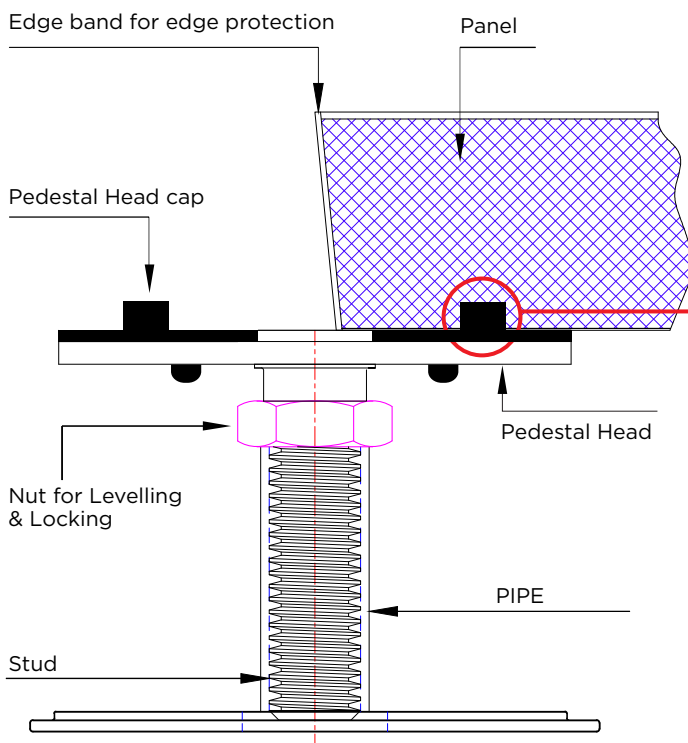
FABRICATION TOLERANCE

Floor Panel Flatness	+ 0.75 mm in any direction
Floor Panel Width or Length from specified size	± 0.50mm
Floor Panel Squareness	± 0.38mm

PANEL CONSTRUCTION



UNDERSTRUCTURE



PANEL BOTTOM VIEW

- The panels are designed with pre-engineered cavity on all four corners to inter-lock with the pins on the PVC cap that leads to positive engagement between the pedestal and access floor panel.
- The factory-engineered Inter-locking design of the panel and the PVC cap enables positive alignment of the floor without any efforts during the installation and frequent access during service.

PANEL FRONT VIEW

