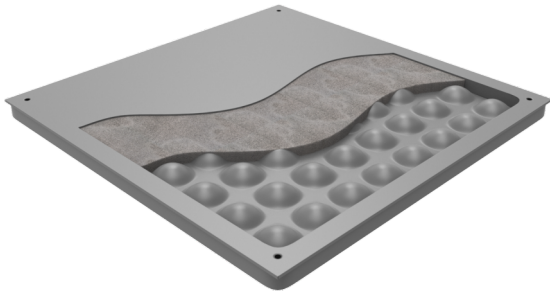


UNITILE UNIFOLD 1650 BARE CORNER LOCK SYSTEM

PANEL ILLUSTRATION



Category	Bare, Corner Lock
Panel size	600 x 600 mm
Core Material	Cement
Panel Core Thickness	30 mm
Panel Weight	13.1 kgs
Weight of System	40kg/m ² for FFH 200mm (varies with height)
Overall Floor Height	65 mm - 2000 mm

FEATURE BENEFITS

- ▶ Unique folded flange design increases edge strength.
- ▶ Guaranteed no squeaking sound as folded flanges are not vulnerable to damage at site.
- ▶ Folded flanges eliminate risk of cuts and accidents to onsite workers.
- ▶ Reduce risk of onsite damage.
- ▶ Increased foot print area boosting panels' structural performance and stability.

PRODUCT STRUCTURAL PERFORMANCE

Concentrated Load (Point Load) (As per CISCA 2007)	363 kgs (800 lbf)
Uniformly Distributed Load (UDL) (As per CISCA 2007)	1650 kg/m ²
Ultimate Concentrated Load (As per CISCA 2007)	1089 kgs (2400 lbf)
Rolling Loads (As per CISCA 2007)	180 kgs (400 lbf)
Fire Rating	Class O & Class 1, ASTM E84 1998 (Flammability) & ASTM E136 (Combustibility)
Pedestal Axial Load Test	18 kN
Pedestal Over Turning Moment Test	113 N x Meters

SYSTEM DESCRIPTION

Unifold 1650 Access floor panel incorporates folded flange technology which ensures a noise neutral floor. The design also improves edge strength and accessibility. Unifold is the most advanced raised access flooring technology available in the world. The Unifold panel is known for its exceptional characteristics of strength and durability.

The pedestal assembly shall provide easy adjustment of leveling and accurately align panels for a maximum ± 25 mm in the vertical direction. The Pedestal head assembly shall consist of embossed head mechanically riveted to a rolled formed stud and 2 check nuts for level adjustment and arresting vertical movement. The pedestal head shall consist of a acoustical pad/PVC cap with inbuilt isolating spacers for Panel location.

PANEL CONSTRUCTION

The UFP 1650 is of size 600 x 600 mm, an all steel welded construction with an enclosed bottom pan of 64 hemispherical cones, while the plain top sheet is fuse-welded at 64 locations to form a panel. All the four sides of the panel are double fold wrapped around the perimeter edges with 4 corner holes on all edges for bolting the panel to the substructure to form a rigid leveled floor.

The hollow panels are pretreated and coated with electrostatically deposited epoxy raisin 60 - 80 micron thick on all the exposed sides of the panel. The hollow core of the panel is injected with a lightweight, fire retardant, noncombustible cementitious compound at high pressure to ensure support of not less than 90% of the top surface area of the panel.

APPLICATIONS

- | | |
|--|---|
| <input checked="" type="checkbox"/> General Office | <input checked="" type="checkbox"/> Casino |
| <input checked="" type="checkbox"/> Training Room | <input checked="" type="checkbox"/> Hotel |
| <input checked="" type="checkbox"/> Auditorium | <input checked="" type="checkbox"/> Library |

FACTORY BONDED FINISHES

- | | |
|--|--|
| <input checked="" type="checkbox"/> Bare | <input checked="" type="checkbox"/> Modular Carpet |
|--|--|

UNITILE UNIFOLD 1650 BARE CORNER LOCK SYSTEM

SPECIAL APPLICATIONS

Bridging Sections	Where obstructions prevent the use of pedestals
Ramp Pedestals	Pivot head pedestal to support angled ramp panels

FABRICATION TOLERANCE

Floor Panel Flatness	± 0.75 mm in any direction
Floor Panel Width or Length from specified size	± 0.50 mm
Floor Panel Squareness	± 0.38 mm

OVERALL FLOOR HEIGHT/ FFH

Pedestal	65mm - 2000mm
Type	Corner Lock

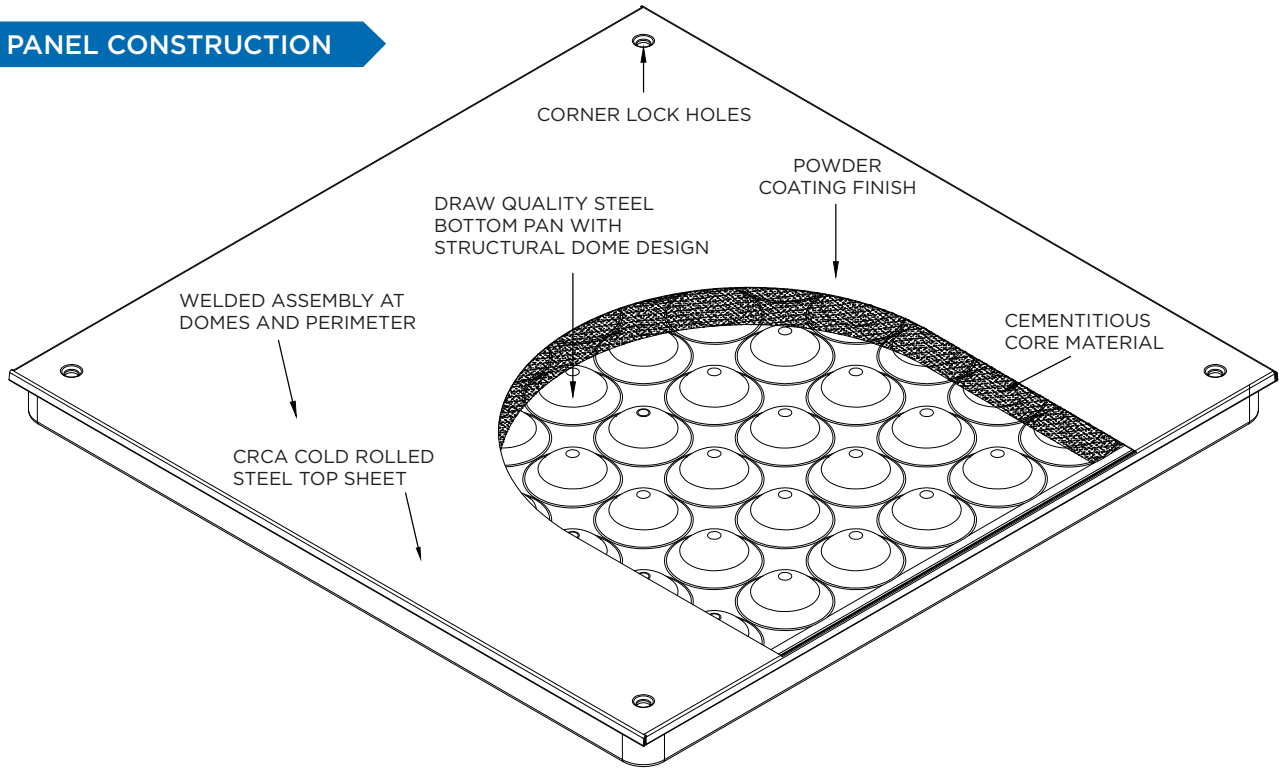
INSTALLATION TOLERANCE

Overall level before application of any load	± 1.5 mm over any 5.00 Sq mt. ± 6 mm over any size of basic space.
Panel Level	+ 0.75 mm before the application of any load.
Panel Interchangeability installation and removal	Interchangeable (except for field cut panels) & replaceable in any of the four directions at 90° increments

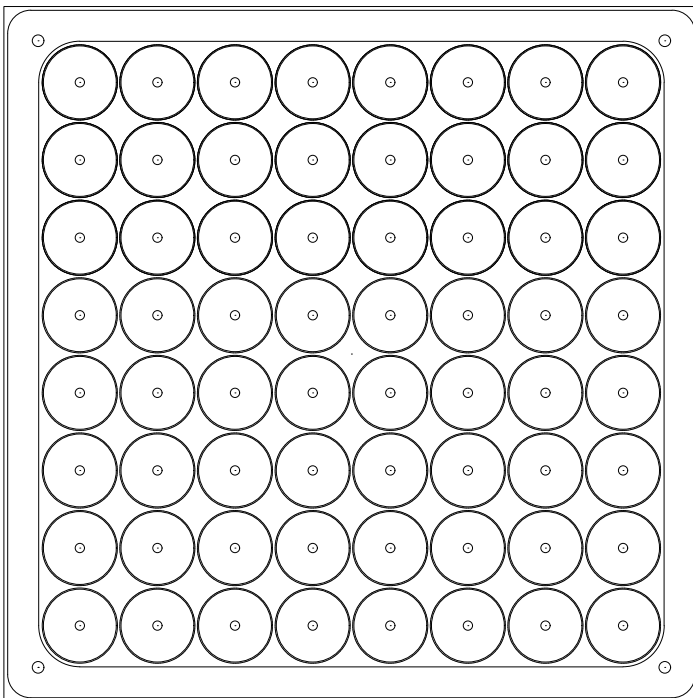
Note:

- The above mentioned loading parameters are derived & defined on the basis of the tests performed by the manufacturer based on the guidelines provided by the specified standards or as per manufacturer's recommendations.
- Manufacturer has all the rights to change or revise the specifications as and when applicable or required without the prior notice.

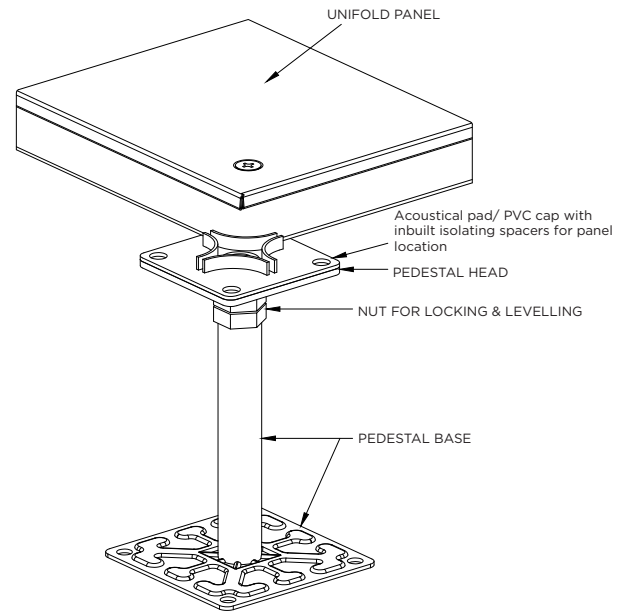
PANEL CONSTRUCTION



PANEL BOTTOM VIEW



UNDERSTRUCTURE



SECTION VIEW

